

# Nº1 Journey Campus

NO.1 JOURNEY CAMPUS, CASTLE PARK, CAMBRIDGE, CB3 0AT



journey

journeyre.io

Journey Campus is an innovation estate within walking distance of the West Cambridge science cluster and a short walk from the historic city core.

The campus plays host to several multinational tech companies, as well as a number of professional service providers focused on the knowledge economy.

A phased refurbishment has been undertaken to enhance the appearance of the campus while complimenting the heritage of the local area. With sustainability at the forefront, having regard to the embodied carbon in the existing buildings, the campus will see further significant improvements to the external landscaping and amenity, ensuring both customers and the public alike benefit from a standout destination in Cambridge.

# FLASK.

Anchored at the heart of the campus within First-Step by journey, the new café **Flask** creates a vibrant hub for conversations, idea-sharing and community, designed for businesses that thrive on connection and collaboration.

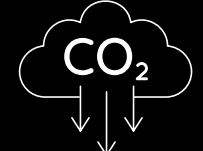


JOURNEY CAMPUS, CASTLE PARK, CAMBRIDGE, CB3 0AT

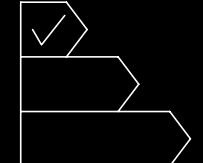
Sustainability at the core, No. 1 Journey Campus is a flagship retrofit designed to minimise operational and embodied carbon while supporting occupiers' ESG objectives and delivering future-ready workspace.



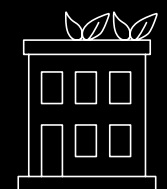
All-electric building with ASHPs and PV



Low embodied carbon retrofit



Targeting BREEAM Excellent / EPC A



Green roofs and biodiversity planting



Cycle hub, lockers and showers



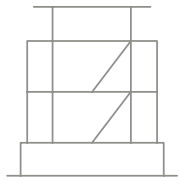
Supports occupier ESG and net-zero pathways

AERIAL VIEW OF NO. 1 JOURNEY CAMPUS

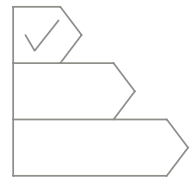
\*Computer generated image is indicative only.



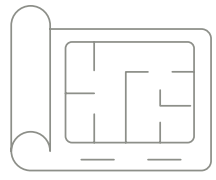
BUILDING SPECIFICATION /



Back to frame refurbishment & extension



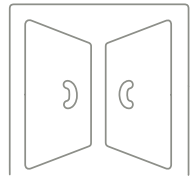
Targeting BREEAM excellent & EPC A



Grade A CAT A space



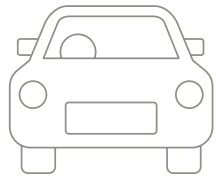
Campus location with on-site café



Twin entrances & feature reception



All-electric building



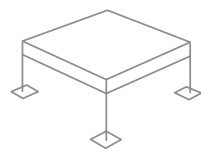
Secure on-site car parking



In building shower and changing facilities



Purpose-built secure cycle hub with lockers & changing facilities



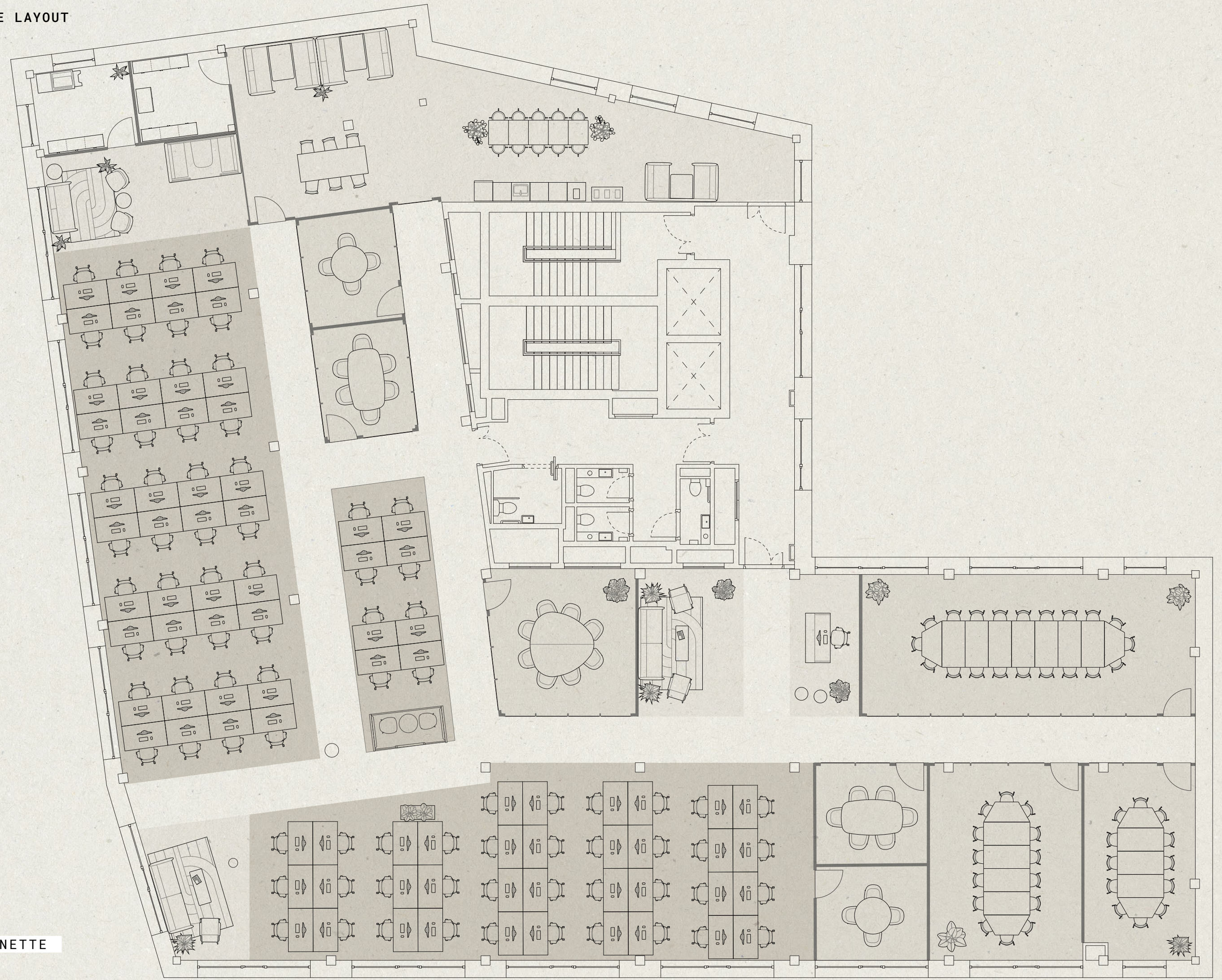
Raised access floors



\*Computer generated image is indicative only.

Elevate your brand with a best-in-class commercial office designed to inspire peak performance and leave a lasting impression.





84 DESKS (1:90 SQ FT)

1 20-SEATER BOARDROOM

1 14-SEATER BOARDROOM

1 12-SEATER BOARDROOM

1 8-SEATER BOARDROOM

2 6-SEATER MEETING ROOMS

2 4-SEATER MEETING ROOMS

2 MEETING / PHONE BOOTHS

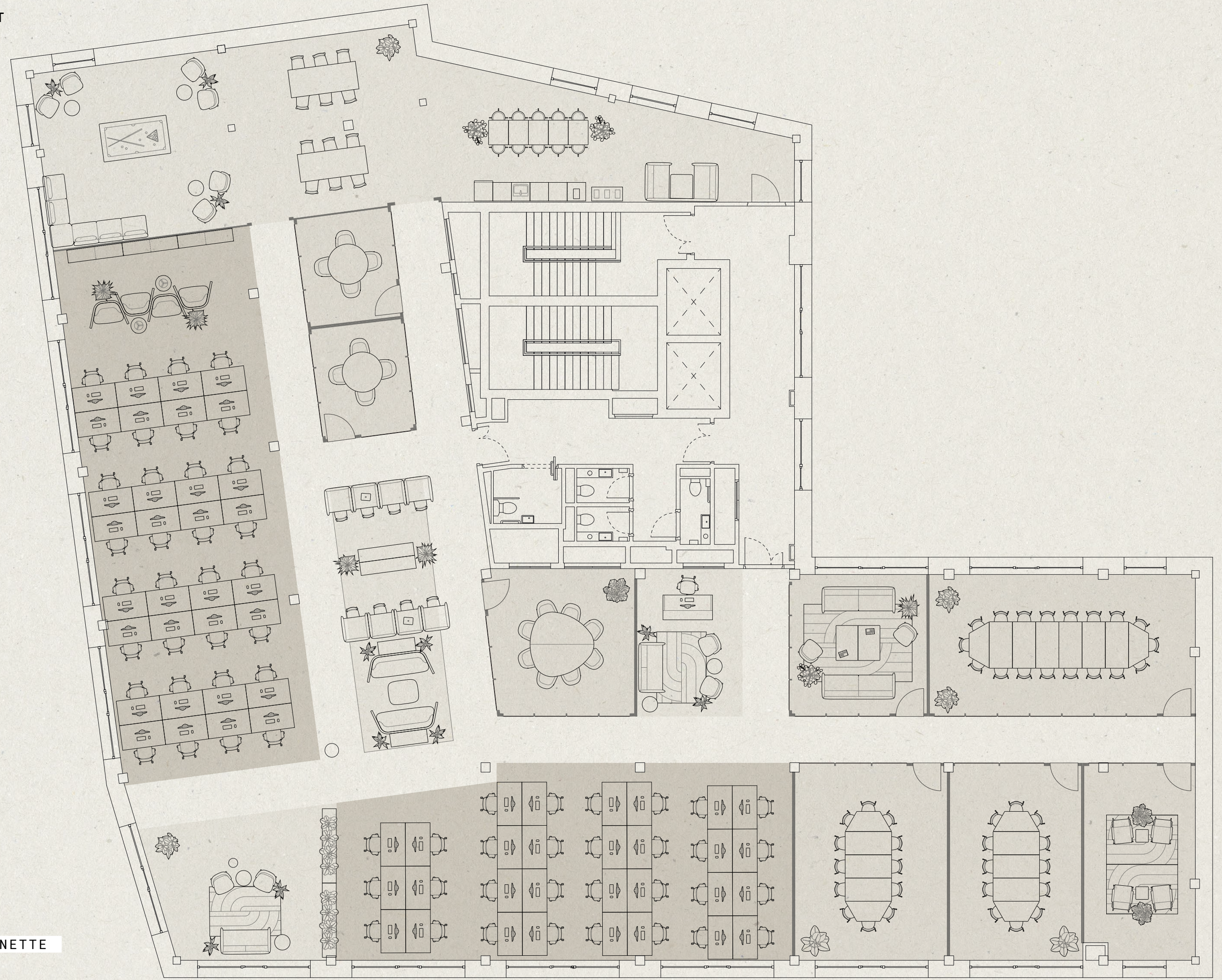
1 SOCIAL BREAK-OUT SPACE & KITCHENETTE

1 WELCOME RECEPTION

Fuel your company's next big idea in a space that's as bold and unconventional as your work. No.1 Journey Campus blends industrial edge with high-concept design to create a literal playground for innovation.



NO.1 JOURNEY CAMPUS /  
 TECH/CREATIVE EXAMPLE LAYOUT



64 DESKS (1:120 SQ FT)

1 18-SEATER BOARDROOM

2 12-SEATER BOARDROOMS

1 8-SEATER BOARDROOM

2 4-SEATER MEETING ROOMS

2 LOUNGE MEETING ROOM

2 HOTDESK / FOCUS AREAS

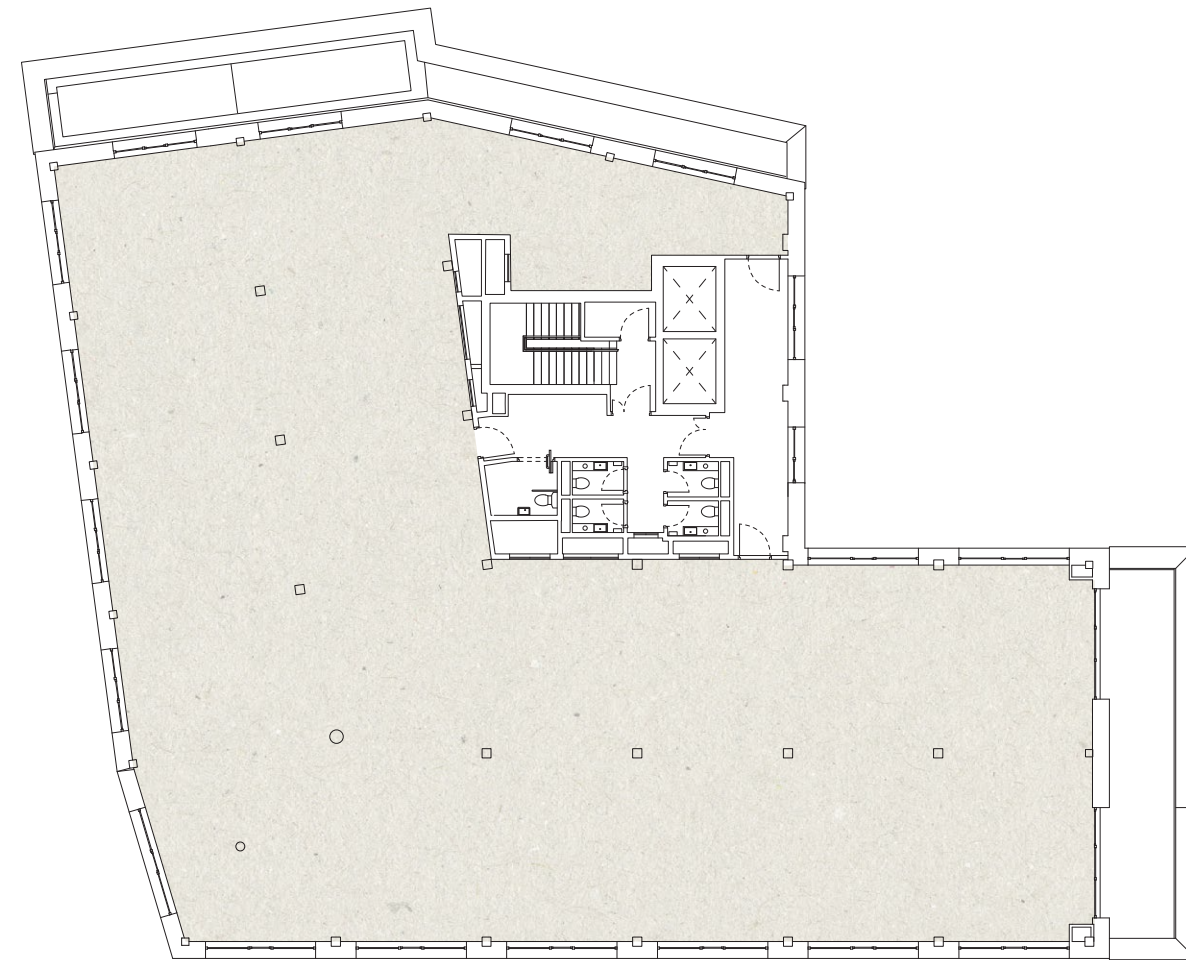
1 SOCIAL BREAK-OUT SPACE & KITCHENETTE

1 WELCOME RECEPTION

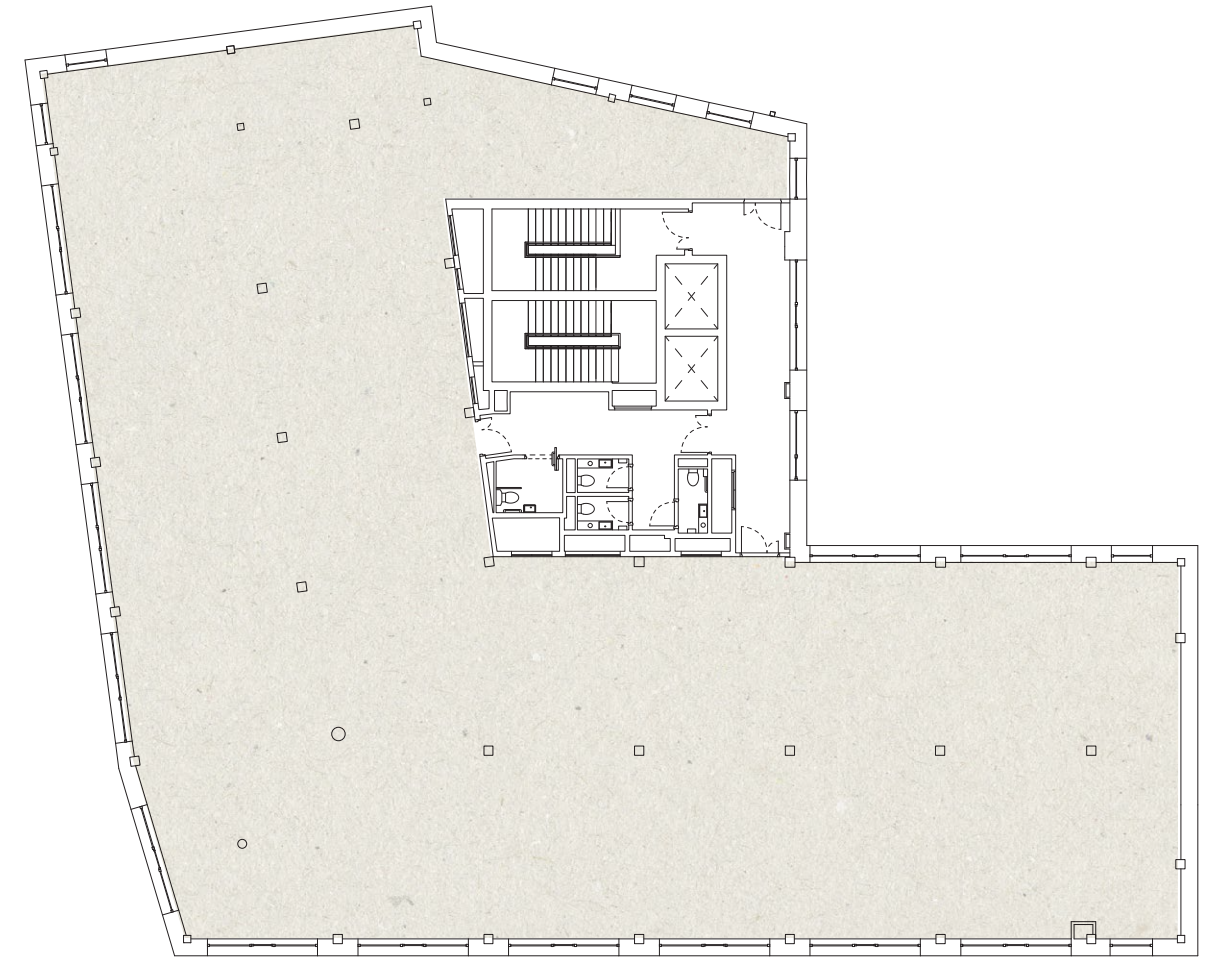
NO.1 JOURNEY CAMPUS /  
CAT A FLOOR PLATE



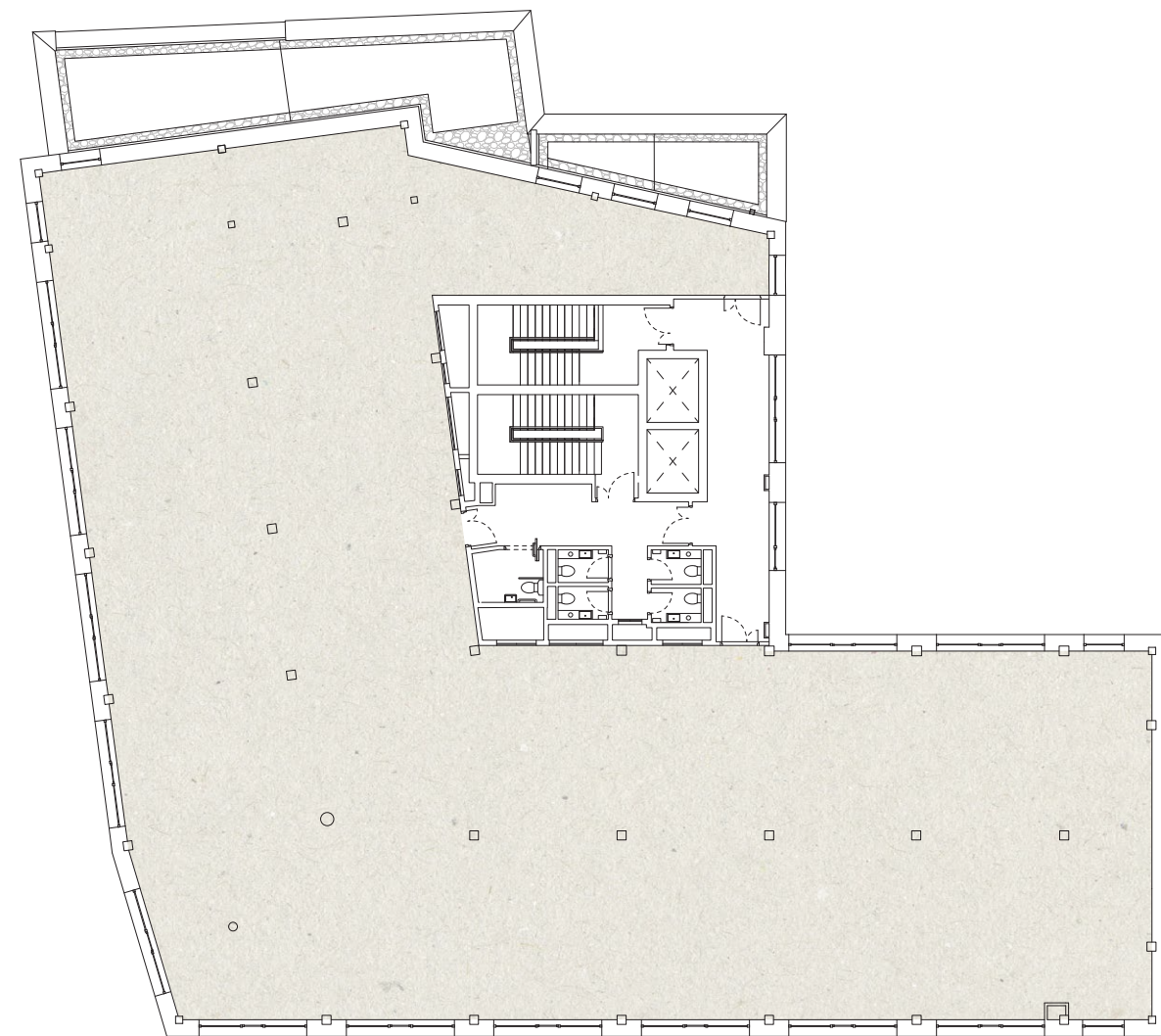
FLOOR PLANS /  
BUILDING AVAILABILITY



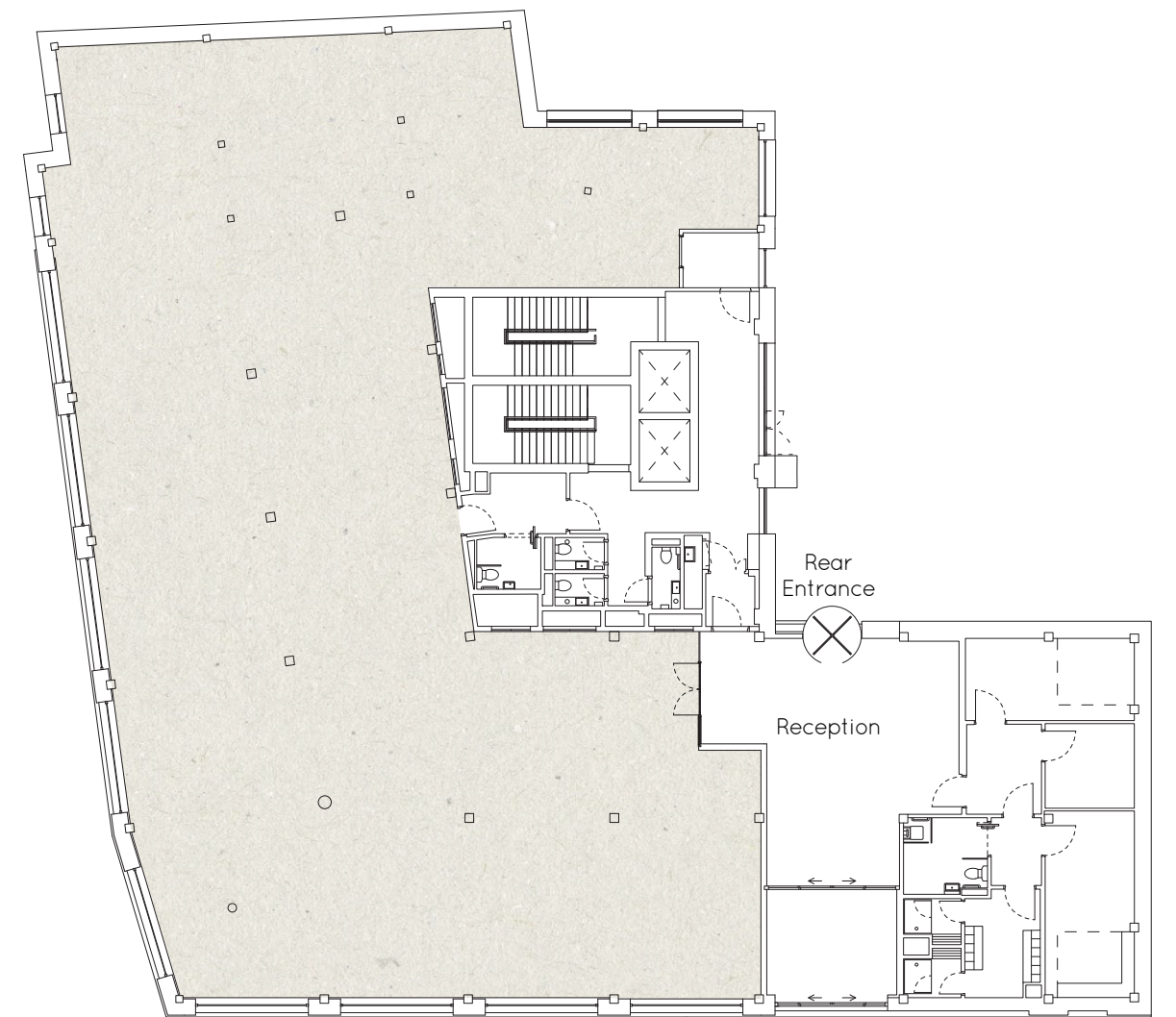
THIRD



SECOND

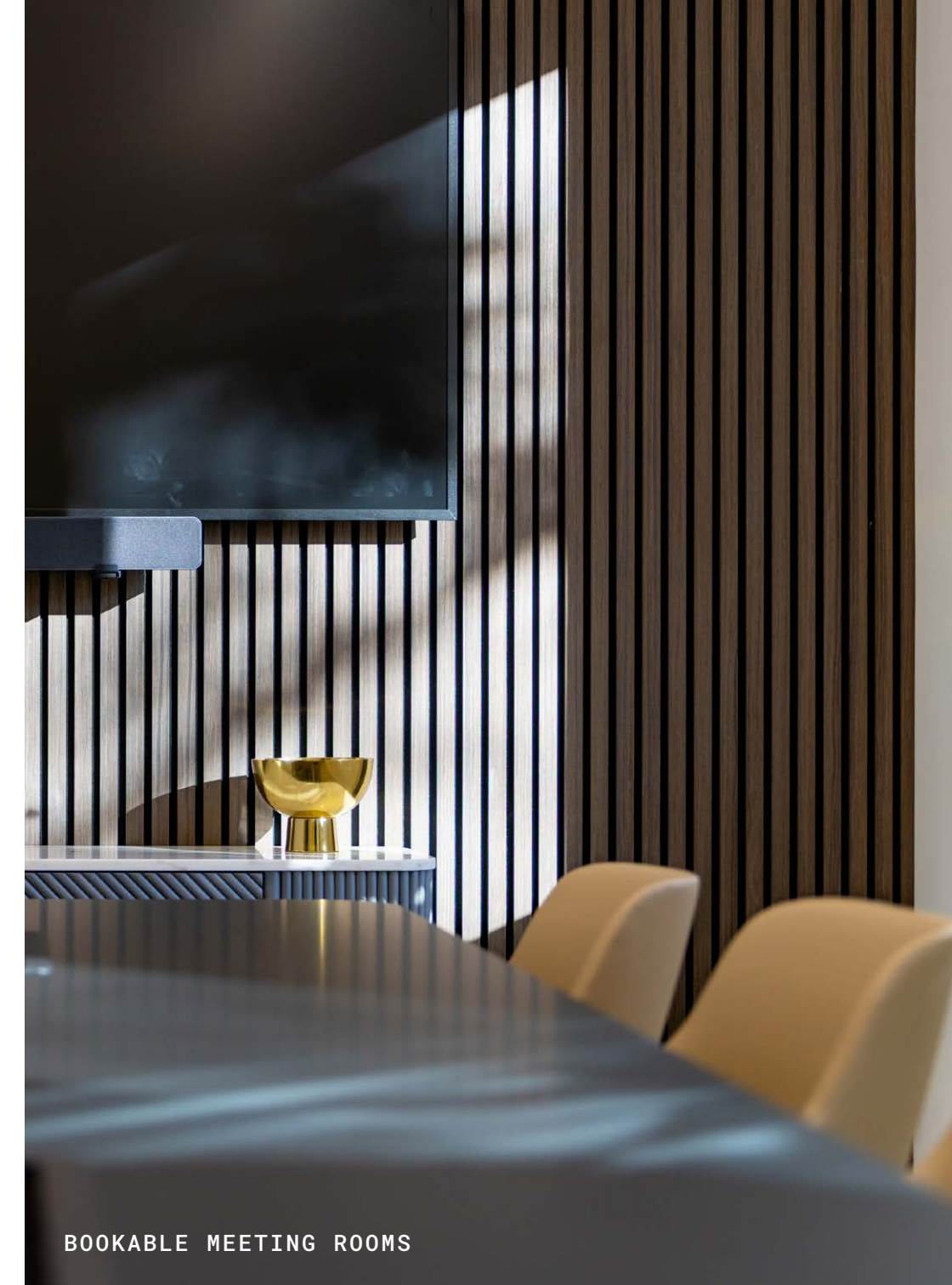


FIRST



GROUND

FLOOR	INTERNAL AREA (SQ FT)
THIRD	6,748
SECOND	7,519
FIRST	7,514
GROUND	6,478
RECEPTION	855
TOTALS	29,114



With secure bike storage, lockers and an on-site café serving coffee, breakfast and lunch, Journey Campus makes sustainable commuting effortless. The café doubles as a community hub, hosting regular events with the opportunity to meet like-minded professionals.

First-Step by journey offers bookable meeting rooms, providing private spaces to host clients conveniently within a campus location.



## No. 1 Journey Campus is a deep retrofit of the former Babbage House.

Retaining the existing structure and upper floor slabs, a new ground floor slab is provided. The new building includes a new core including wc's, two lifts and two staircases and an additional floor has been added.

All building facades and envelope are new thermally efficient structures incorporating traditional masonry (brick) elevations for durability. The existing waffle slabs soffits are left exposed to provide a feature.

The new building is all electric and incorporates all new building services including VRF comfort cooling, LED lighting with intelligent controls.

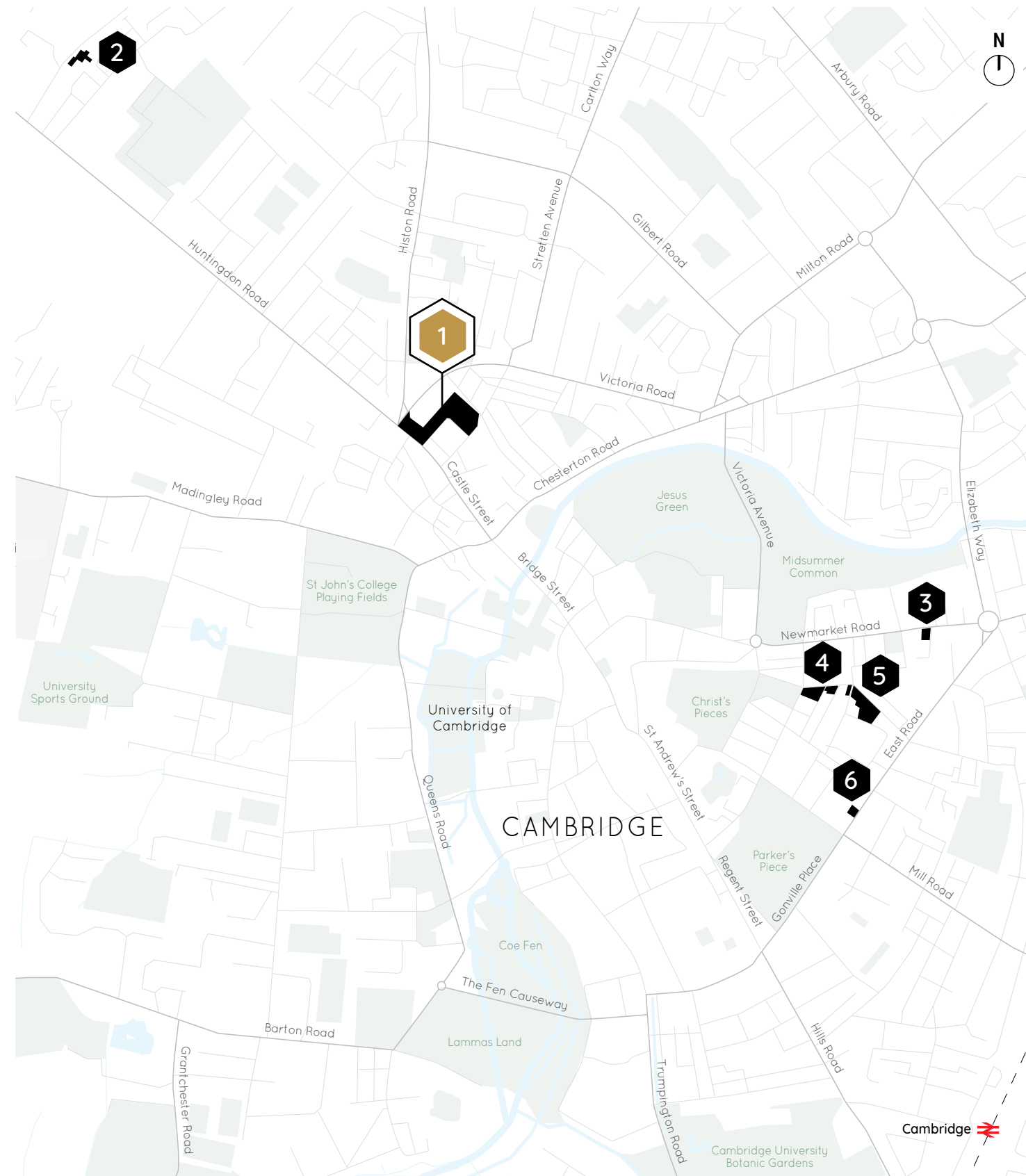
High quality durable finishes are incorporated throughout the new building. Entrance is from Journey Campus and Castle Street with connectivity through the building reception. Shower and locker facilities are provided in the building, and occupiers also benefit from use of the Campus cycle hub facility.

- Floor to u/s services zones (exposed services):
  - Third: 2670mm
  - Second: 2700mm
  - First: 2140mm
  - Ground: 2230mm
- Raised access floors:
  - Third: 390mm o/a
  - Second: varies between 150mm and 230mm o/a
  - First: n/a
  - Ground: 160mm o/a
- Highly sustainable building and key features includes:
  - Renewable energy sources via solar PV panels at roof level and air source heat pumps
  - BREEAM Excellent rating
  - Biodiverse green roofs to maximise rainwater management and provide enhanced ecological value
  - Back to frame retrofit of the existing building, with the waffle slab retained and left exposed, will result in an embodied carbon saving. Exposed concrete finishes for contemporary look
  - EV charging point
  - CAT A fit-out open office plan for flexible internal configurations
  - Flexible M&E layout to facilitate sub-division of floors and flexible office layouts
  - Large glazed windows and curtain walls maximise daylight, enhancing the sense of openness
  - Minimised solar gain with light-shelf (shading components) to the front façade
  - EPC A
  - Water efficient building achieving four Wat 01 credits
- Additional MEP key feature includes:
  - Soffit mounted VRF comfort cooling
  - Exposed services to soffit
  - Two 13 person passenger lifts
  - LED lighting
  - Access control
  - New upgraded power supply
- Enhanced landscape with external seating area
- Low maintenance landscaping to building perimeter
- External seating area adjacent building entrance
- Accessible terrace at third floor
- Two interconnected front entrances designed to create a continuous flow between Castle Street and the Journey Campus
- 37 cycle spaces to the building
- Use of the communal cycle hub in Castle Court
- CAT A fit-out open office plan for flexible internal configurations
- Durable high-quality finishes throughout, including main entrance, cores and stairs
- Wellbeing facilities at the ground floor include three showers (one with accessible shower and WC) and 33 lockers
- WC provisions include:
  - Third: 4 x gender neutral, 1 x accessible.
  - Second: 2 x gender neutral, 1 x accessible, 1 x ambulant.
  - First: 4 x gender neutral, 1 x accessible.
  - Ground: 2x gender neutral, 1 x accessible, 1 x ambulant.

No. 1 Journey Campus sits within the journey portfolio - a property company focused on delivering flexible and fitted spaces in the UK's key knowledge economies. This allows our residents to focus on growing their core business rather than tying up capital and energy in real estate strategy.

The operational portfolio includes lab, incubator, R&D, workspace, event space and supporting amenities including residences. The goal is to create unique spaces for our residents and to promote well-being and ESG.

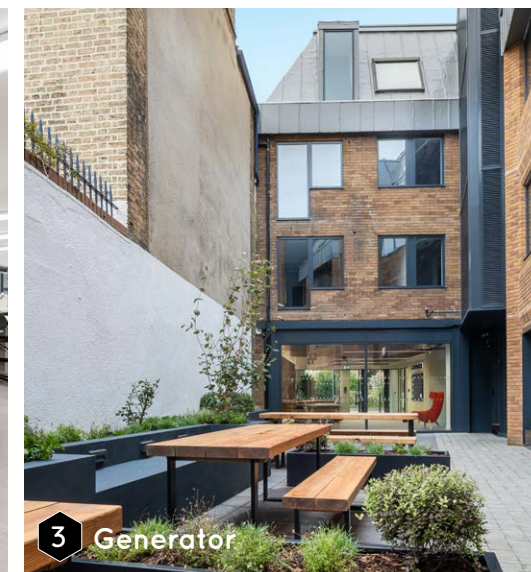
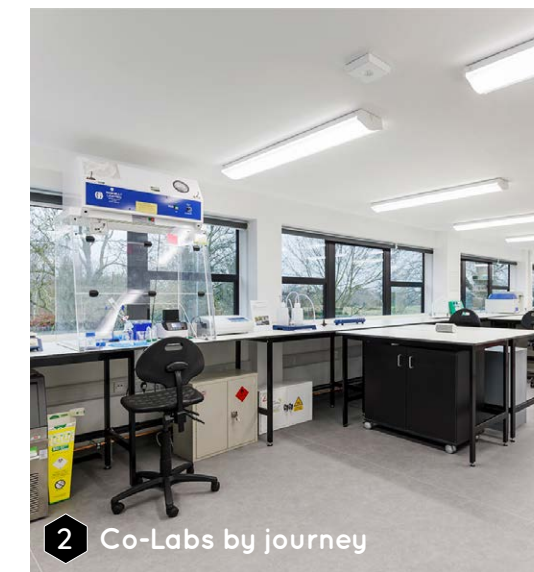
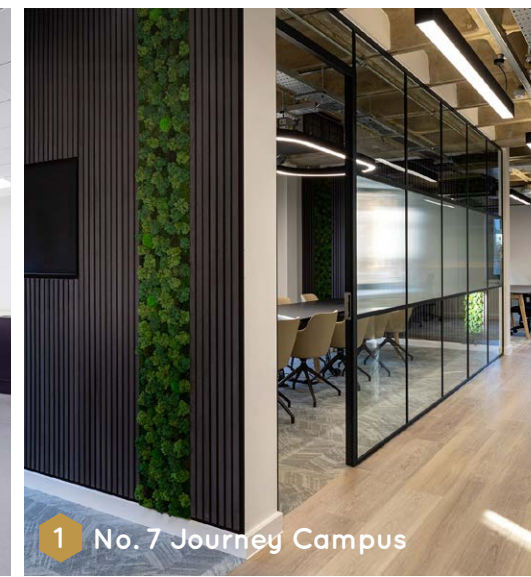
The platform is connected by a digital interface providing communication, clubs, and events to create a member community. **journey** has an experienced management team that understands the importance of listening and reacting to customer requirements. This is especially important for fast growing companies that have dynamic and evolving space requirements.



Journey Campus is located in north-west Cambridge, between the science parks in north Cambridge and the West Cambridge Innovation District, just off Huntingdon Road with access via bus, bicycle and car directly to the historic city centre.

- 1 Journey Campus
- 2 Co-Labs
- 3 Generator
- 4 The Fitzroy
- 5 Burleigh Campus
- 6 Wellington House

NO.1 JOURNEY CAMPUS,  
CASTLE STREET,  
CAMBRIDGE, CB3 0AT



WIDER CAMBRIDGE CITY CENTRE /  
LOCAL AMENITY & TRANSPORT LINKS

Journey Campus is situated on the edge of the city centre at the southern end of the main arterial roads of Huntingdon Road, Histon Road and Madingley Road, which ensures easy access to the A14, M11, A428 and the inner ring road.

County Hall and the historic Castle Mound are situated adjacent to the campus. There are frequent bus services, including the Cambridge Guided Bus, to and from the city centre as well as Cambridge North and Cambridge Station.

Within walking distance are a wide variety of restaurants, bars and coffee shops, along with a number of retail options on Bridge Street leading into Market Square.

Travel times

🚆 Cambridge Station

Car	13 mins
Cycle	12 mins
Bus	17 mins
E-Scooter	19 mins

🚆 Cambridge North Station

Car	14 mins
Cycle	16 mins
E-Scooter	24 mins
Bus	34 mins

🚗 M11/A14 Junction by Car

Huntingdon Road	9 mins
Cambridge Road	9 mins
Milton Road	12 mins

Bars & Restaurants

	walking time
1 Sir Isaac Newton	1 mins
2 Pakka	2 mins
3 Namaste Village	3 mins
4 The Architect	3 mins
5 Castle Inn	3 mins
6 The Grapes	4 mins
7 Carpenters Arms	4 mins
8 The Punter	5 mins
9 Galleria	7 mins
10 The Topsy Vegan	8 mins
11 The River Bar	9 mins
12 KIBOU	12 mins
13 The Ivy	13 mins

Coffee

1 Kettle's Yard Cafe	5 mins
2 Frédéric's	7 mins
3 Fitzbillies	7 mins
4 Bould Brothers Coffee	10 mins
5 Michaelhouse Cafe	14 mins
6 Cafe at Abantu	15 mins
7 Market Square Coffee	16 mins

University Colleges

1 St John's College	8 mins
2 Jesus College	13 mins
3 Trinity College	15 mins
4 Christ's College	15 mins
5 Emmanuel College	17 mins

Retail

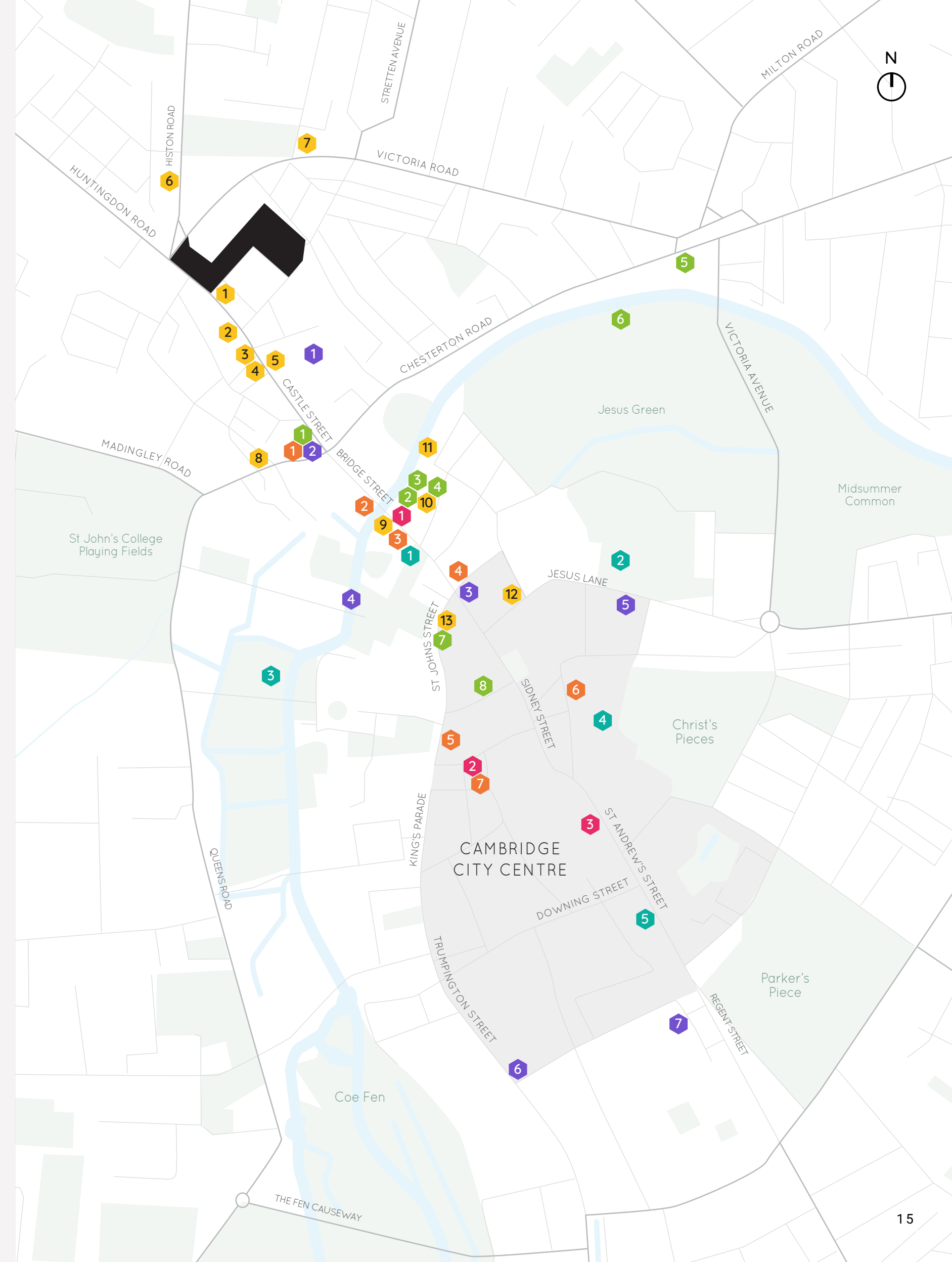
	walking time
1 Cambridge Wine Merchants	7 mins
2 All Saints Garden Art & Craft Market	11 mins
3 Cambridge Market Square	14 mins
4 Grand Arcade	15 mins
5 Lion Yard	18 mins

Leisure

1 Kettle's Yard	4 mins
2 Punting Tours Cambridge	8 mins
3 Quayside	8 mins
4 The Varsity Hotel & Spa	9 mins
5 The Tivoli	11 mins
6 Jesus Green Lido	11 mins
7 Cambridge Gin Laboratory	12 mins

Culture

1 Castle Mound	3 mins
2 The Museum of Cambridge	4 mins
3 The Round Church	10 mins
4 Bridge of Sighs	13 mins
5 All Saints Church	14 mins
6 The Fitzwilliam Museum	21 mins
7 Heong Gallery	21 mins



# Nº1 Journey Campus

**Important Notice** journey, Bidwells, DTRE or Savills for themselves and for the vendor/lessor as agents for the vendor/lessor give notice that: The information contained in these particulars is intended as a general outline only for the guidance of intending purchasers/lessees and neither journey, Bidwells, DTRE or Savills nor the vendor/lessor on whose behalf these particulars are provided accept any responsibility for any inaccuracies the particulars may contain. Any intending purchaser/lessee should not rely upon them as statements or representations of fact but should satisfy themselves by inspection or otherwise as to their correctness. All floor areas and other measurements are approximate. March 2026. Design by Monitto Creative.

FOR FURTHER INFORMATION /  
CONTACT US



Nico Riley

07828 556 313

riley@brydellpartners.com

journeyre.io

OR CONTACT OUR RETAINED LEASING AGENTS



George Craig

07779 770 902

George.Craig@bidwells.co.uk

Max Bryan

07793 808 114

Max.Bryan@bidwells.co.uk



Jamie Green

07776 161 534

Jamie.Green@dtre.com

Guy Nicholas

07711 948 922

Guy.Nicholas@dtre.com



Mark Taylor

07721 892 966

Mark.Taylor@savills.com

Ross Hemmings

07890 423 803

Ross.Hemmings@savills.com